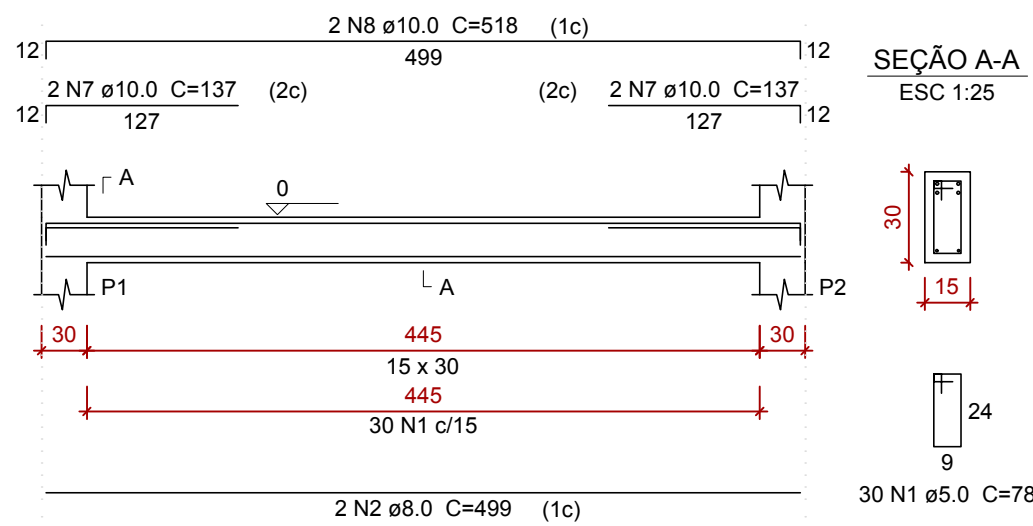


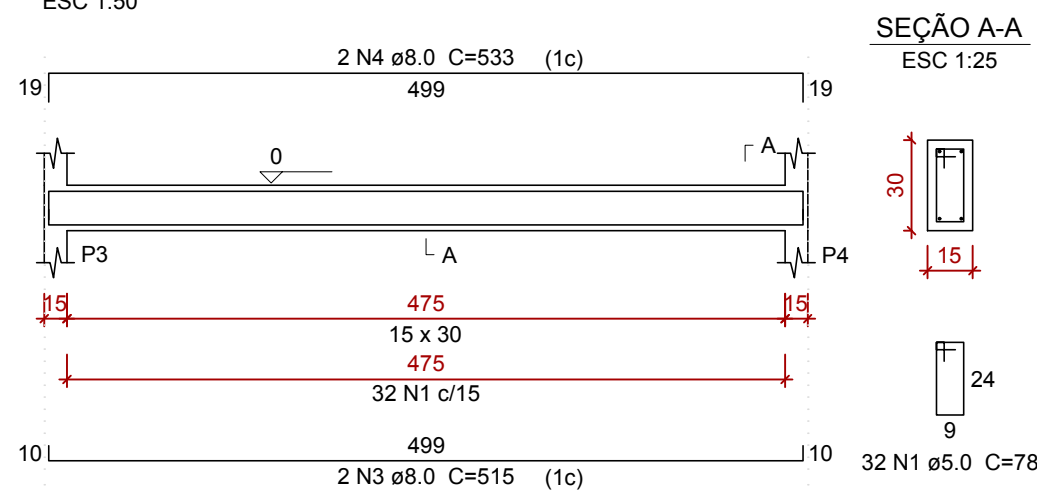
VB101

ESC 1:50



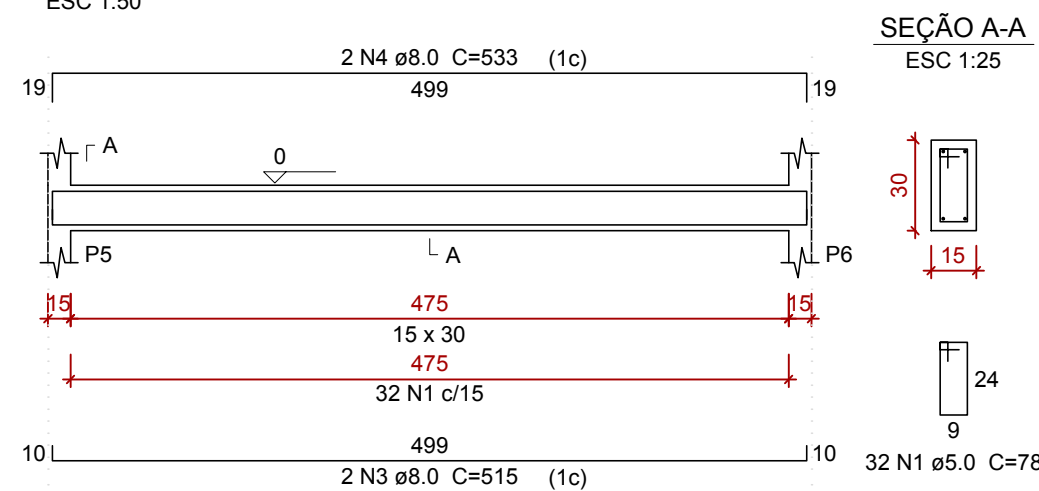
VB102

ESC 1:50



VB103

ESC 1:50



Relação do aço

VB101 VB104	VB102 VB105	VB103 VB106			
CA60	1	5.0	298	78	23244
CA50	2	8.0	4	499	1996
	3	8.0	4	515	2060
	4	8.0	4	533	2132
	5	8.0	4	906	3624
	6	8.0	4	448	1792
	7	10.0	8	137	1096
	8	10.0	4	518	2072
	9	10.0	4	1198	4792
	10	10.0	4	279	1116

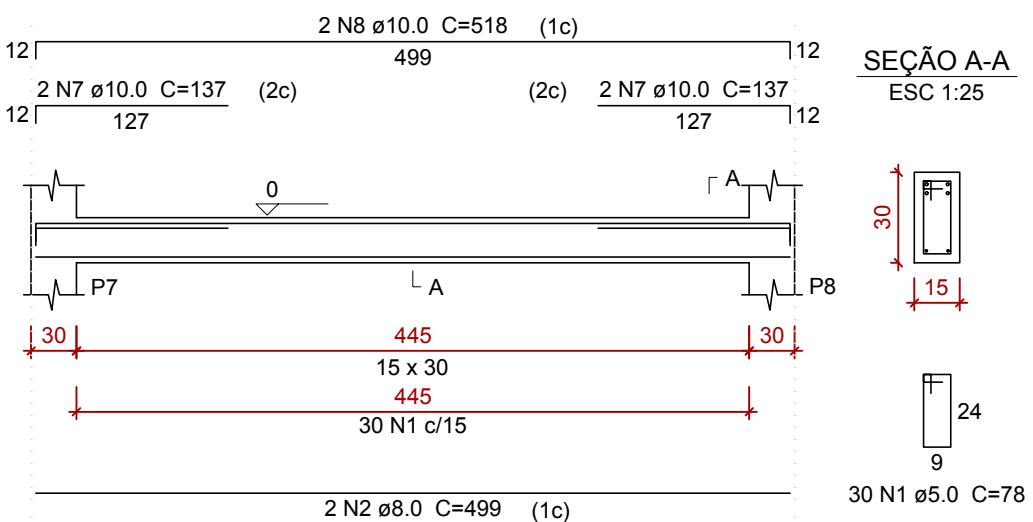
Resumo do aço

AÇO	DIAM	C.TOTAL (m)	PESO + 10 % (kg)
CA50	8.0	116.1	50.4
	10.0	90.8	61.6
CA60	5.0	232.5	39.4
PESO TOTAL			
CA50		111.9	
CA60		39.4	

Vol. de concreto total (C-30) = 2,14 m³
Área de forma total = 35,7 m²

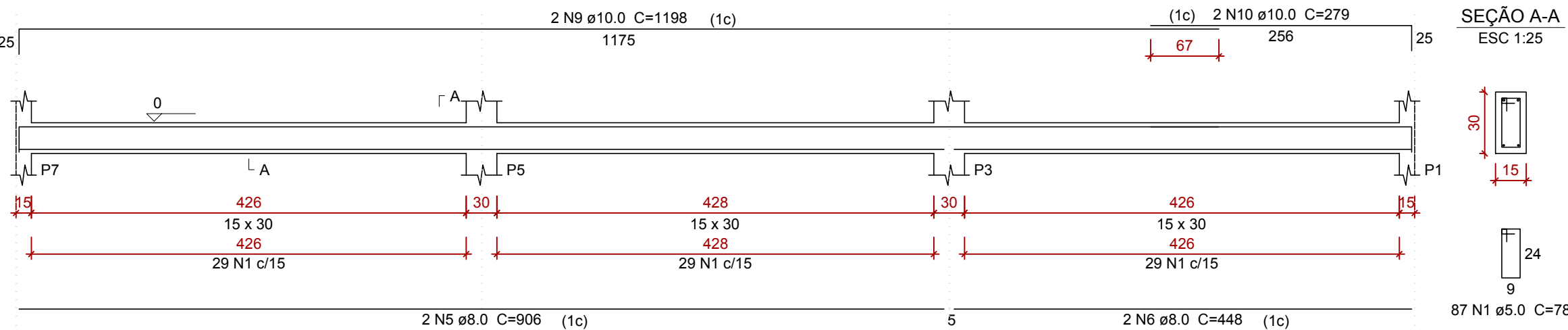
VB104

ESC 1:50



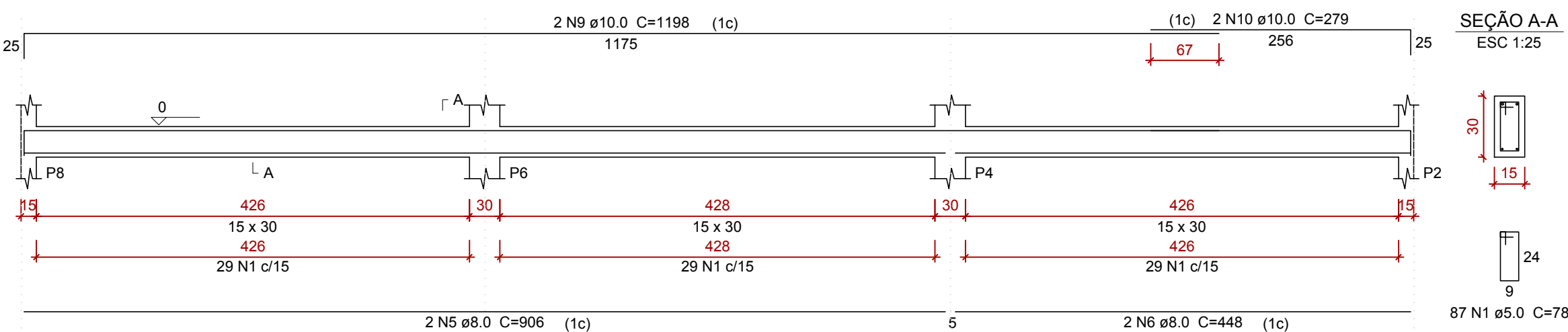
VB105

ESC 1:50



VB106

ESC 1:50



DETALHAMENTO DAS VIGAS BALDRAME

3-5

CONTRATANTE:
PREFEITURA MUNICIPAL DE FAMA
CNPJ: 18.243.253/0001-51 | TELEFONE: (35)3296-1180

RESPONSÁVEL TÉCNICO PELO PROJETO
KAYO HENRIQUE MOREIRA
CREA-MG: 199774/D | TELEFONE: (35) 9.9950-7126

PROPRIETÁRIO:
PREFEITURA MUNICIPAL DE FAMA
CNPJ: 18.243.253/0001-51 | TELEFONE: (35)3296-1180

ENDEREÇO:
RUA BRASÍLIA, 395.
BAIRRO: CENTRO | CIDADE / UF: AREADO-MG